

Performance X-ray Technology
Proven solution. Radically enhanced.



Eagle **Advances** Inline Detection and Inspection Technologies for Poultry Products

Eagle inspection technologies are best in class, adapted to our customers' unique line requirements. As a pioneer in meat and poultry inspection, we have worked successfully with processors of all sizes and types in all areas of the globe, tailoring our solutions to their specific product application needs. Our systems are easy to operate, hygienically constructed and stand up to the rigors of daily operation. Powered by our advanced technologies, they ensure accurate detection and reliable results.

We invite you to explore our newest technologies that will ultimately make the maximum difference in **product safety and performance** on your processing lines.



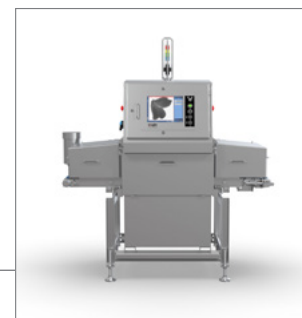
RM13 Series



Tall PRO XSDV



Pipeline



Pack 400 HC



RMI 400 with Reject

Introducing PXT™ the **NEW Industry Standard** in X-ray Detection Technology

For over 25 years single and then dual energy technologies have been the standard in x-ray detection to help poultry processors provide safe and high quality products to their customers. Eagle has now set a new industry standard in bone and contaminant detection. [Introducing PXT™ \(Performance X-ray Technology\)](#).



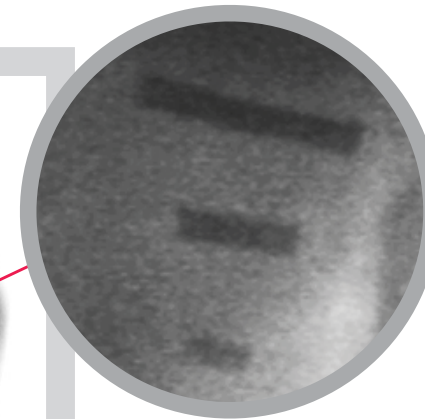
Product



Single



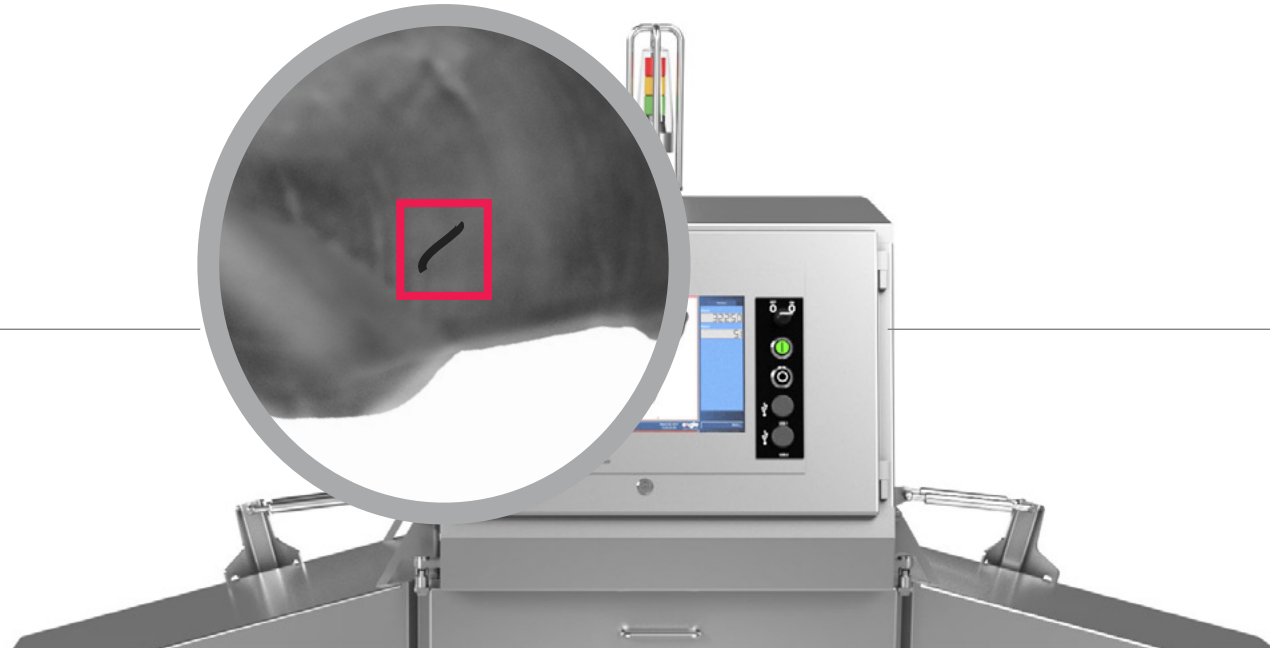
Dual



PXT™

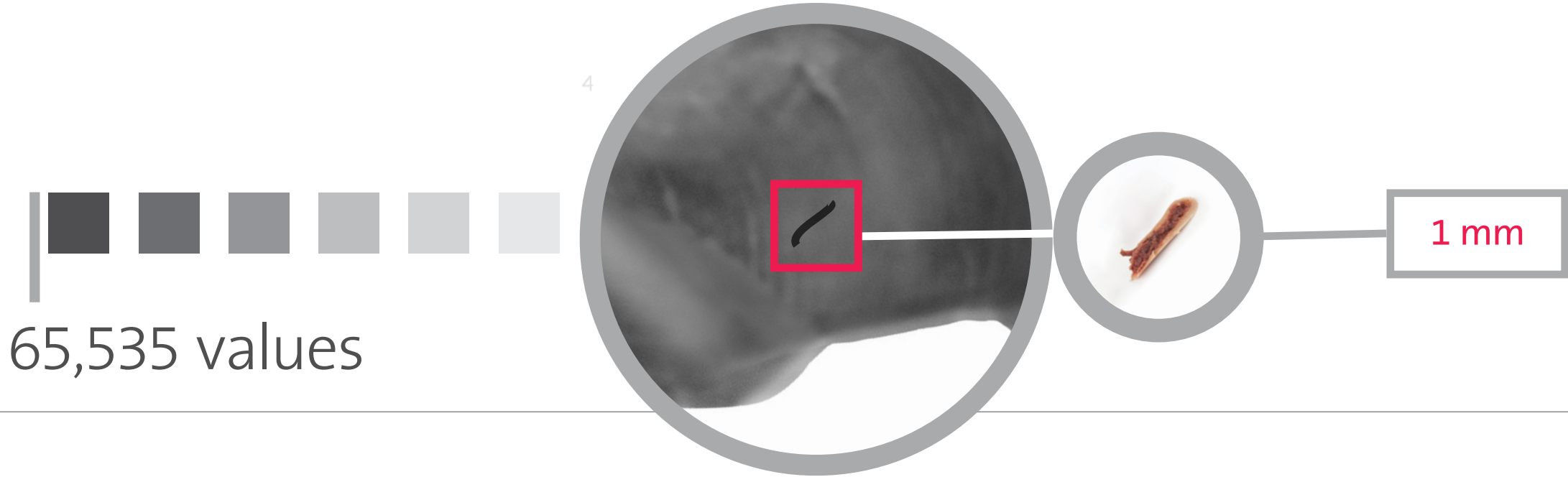
Eagle Machines **Equipped with PXT™** will Benefit from:

- **Unparalleled Detection:** Automating the ability to repeatedly detect the smallest of bone fragments, down to 1 mm in poultry products.
- **Lower False Rejects:** This means less product rework, resulting in reduced labor requirements and improved operational performance.
- **Unmatched Versatility:** Suitable for all forms of poultry, fresh or frozen, bulk flow to retail packages and from single to multi-lane processing lines.
- **Lowest Total Cost of Ownership:** Product reliability, maximum uptime and simplicity of operation combine to improve throughput and minimize total cost of operation.



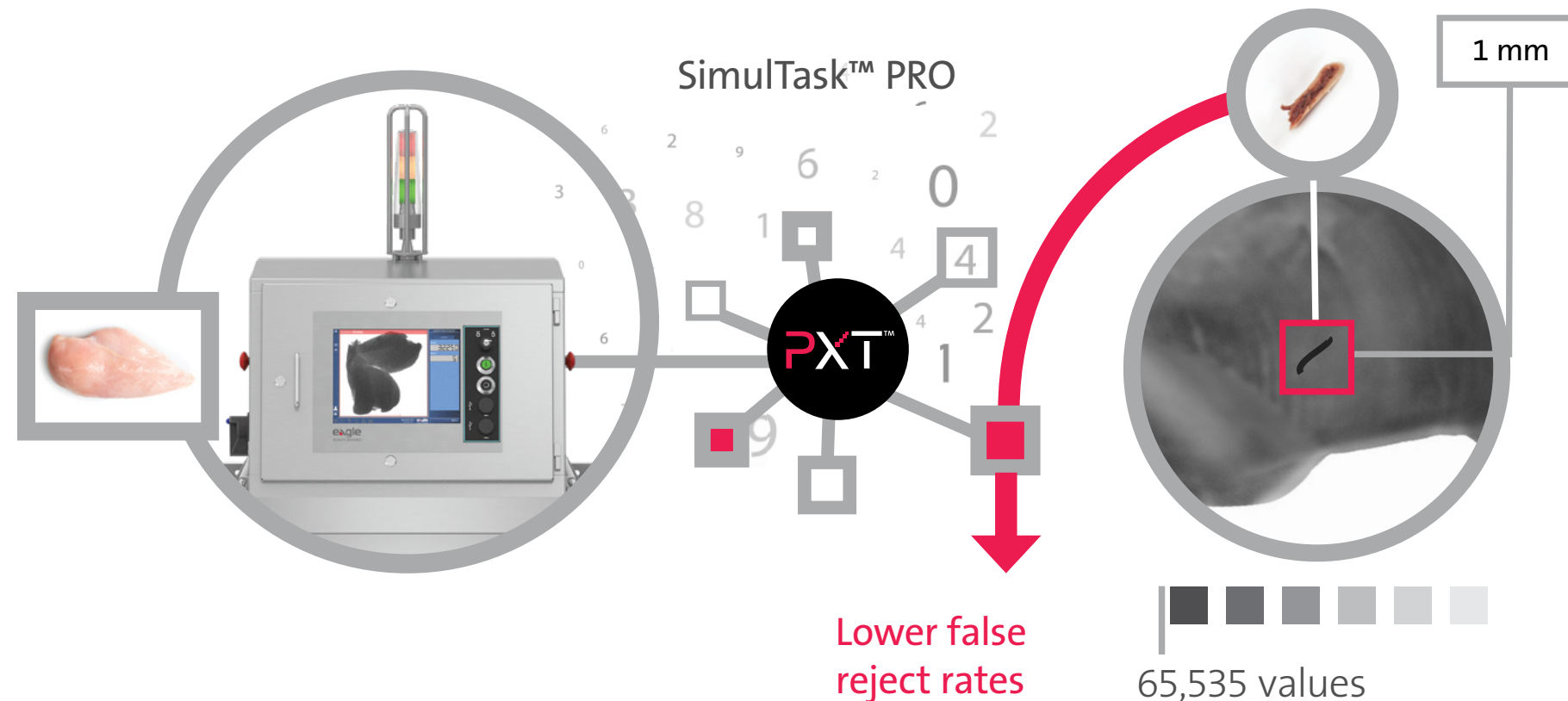
PXT™ Technology has Been Radically Enhanced to Empower Superior Performance Providing **Unparalleled Detection**

PXT™ is a breakthrough technology that delivers a quantum leap in x-ray inspection performance. The PXT™ detector captures more detailed usable data about the product being inspected than has previously been possible – **providing the unmatched ability to detect bones down to 1 mm.**



PXT™ Combined with SimulTask™ PRO Image Analysis Software Lowers False Reject Rates

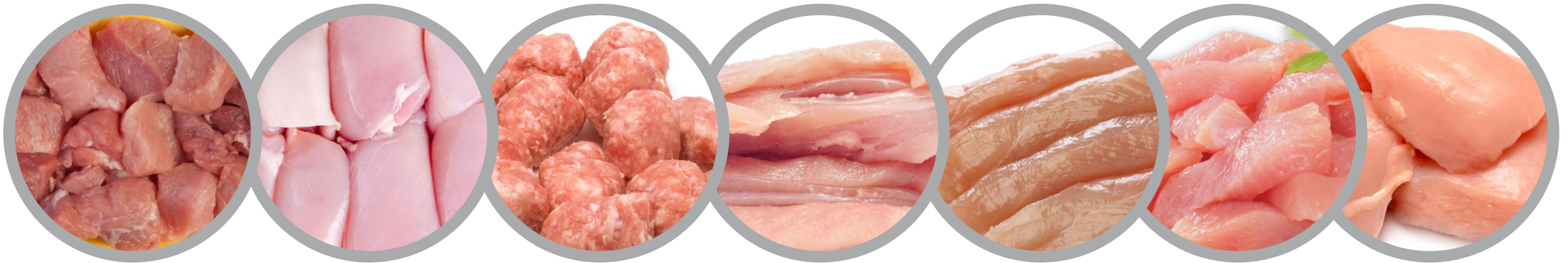
The superior quality data from the PXT™ detector, when combined with [Eagle's SimulTask™ PRO advanced image analysis software](#), which uses the industry's highest greyscale range of 0-65,535 values, creates the highest resolution image to **significantly reduce false reject rates**, leading to a new industry standard in detection accuracy.



PXT™ Provides **Unmatched Versatility**

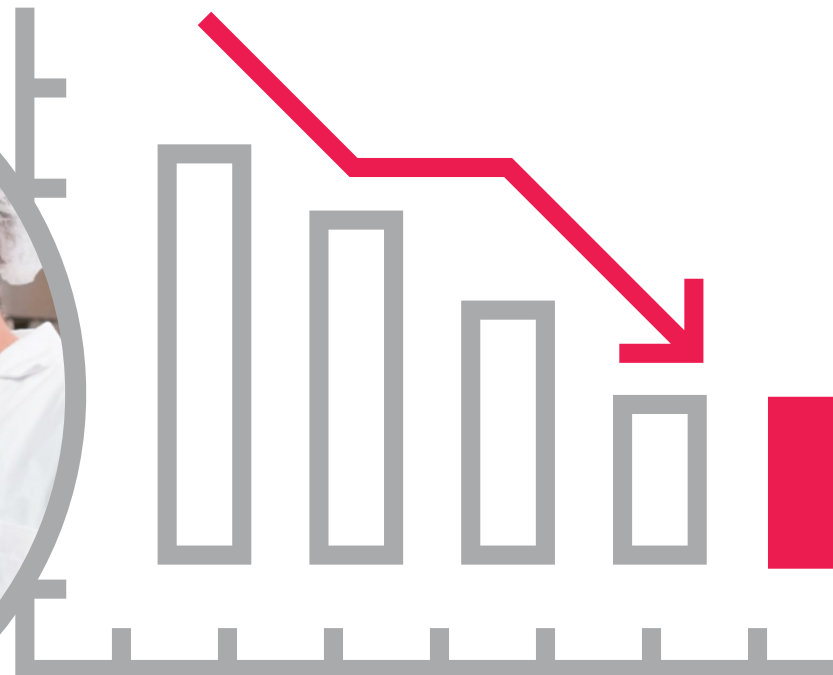
PXT™ can be deployed to suit a **wide range of applications covering upstream in process through to end of line packaging.**

PXT™ can handle thicker product like turkey breasts or thinner product like chicken tenderloins that are fresh or frozen as well as lines configured for bulk flow or retail packaging in single lane or multi-lane configurations.



Delivering the Formula for the **Lowest Cost of Ownership**

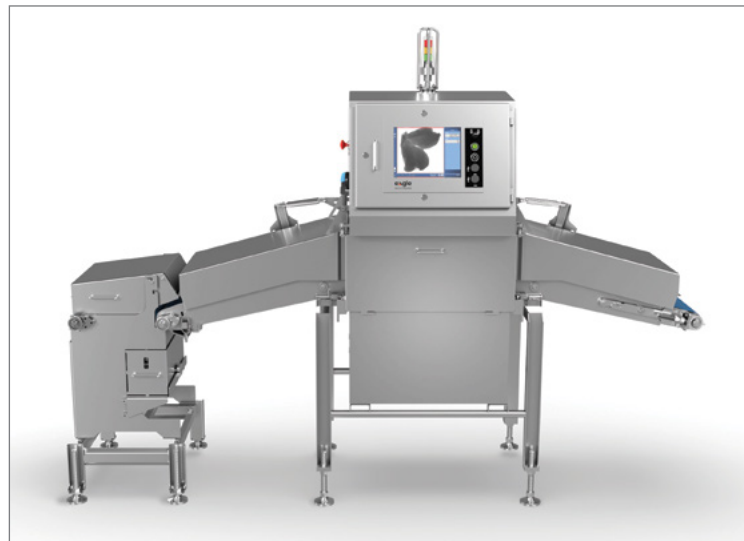
Easy to operate machines equipped with PXT™ **increase uptime, improve efficiencies and line performance** to deliver the lowest total cost of ownership.



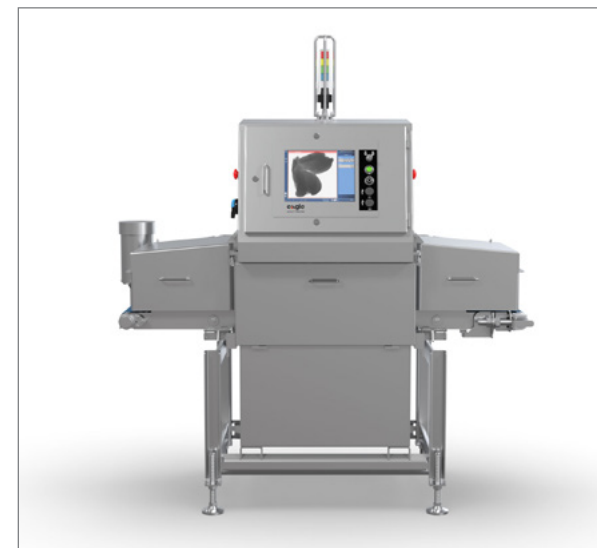
WATCH VIDEO

The Eagle **RMI 400** and Eagle **Pack 400 HC** Equipped with PXT™

Eagle's total poultry solutions allow processors to isolate and manage critical control points on their processing lines. The combination of hygienically constructed equipment that stands up to the rigours of daily operation, while being powered by the most advanced technologies, provides the formula for **maximum uptime, secured safety and compliance and quality assurance backed with traceability.**



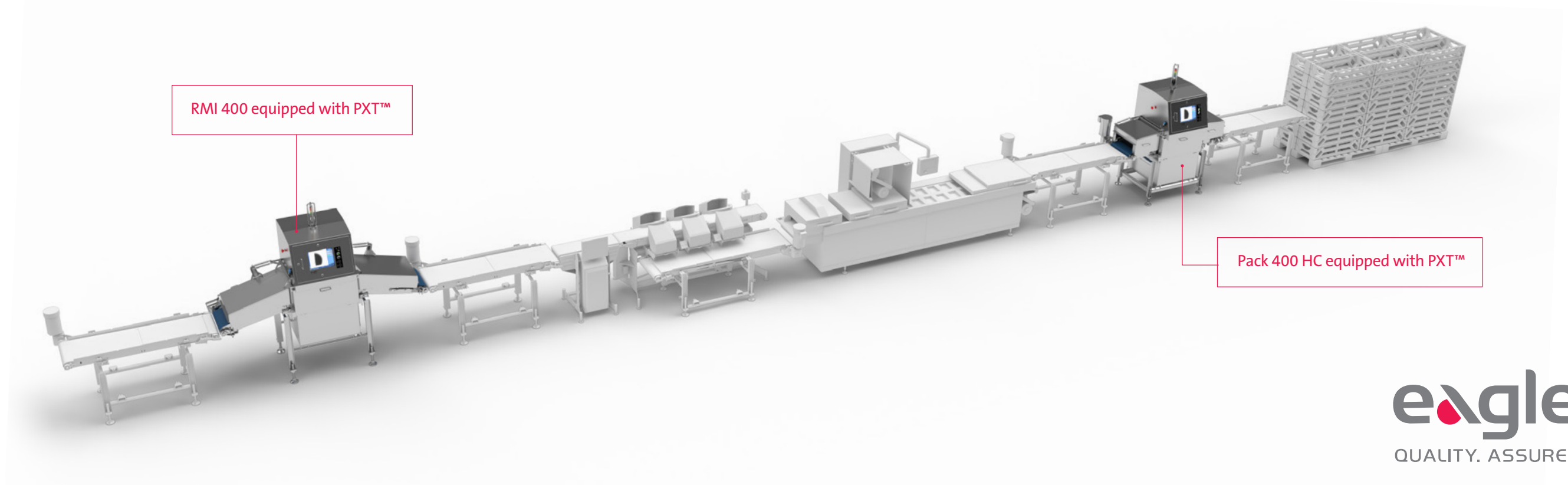
RMI 400 with Reject



Pack 400 HC

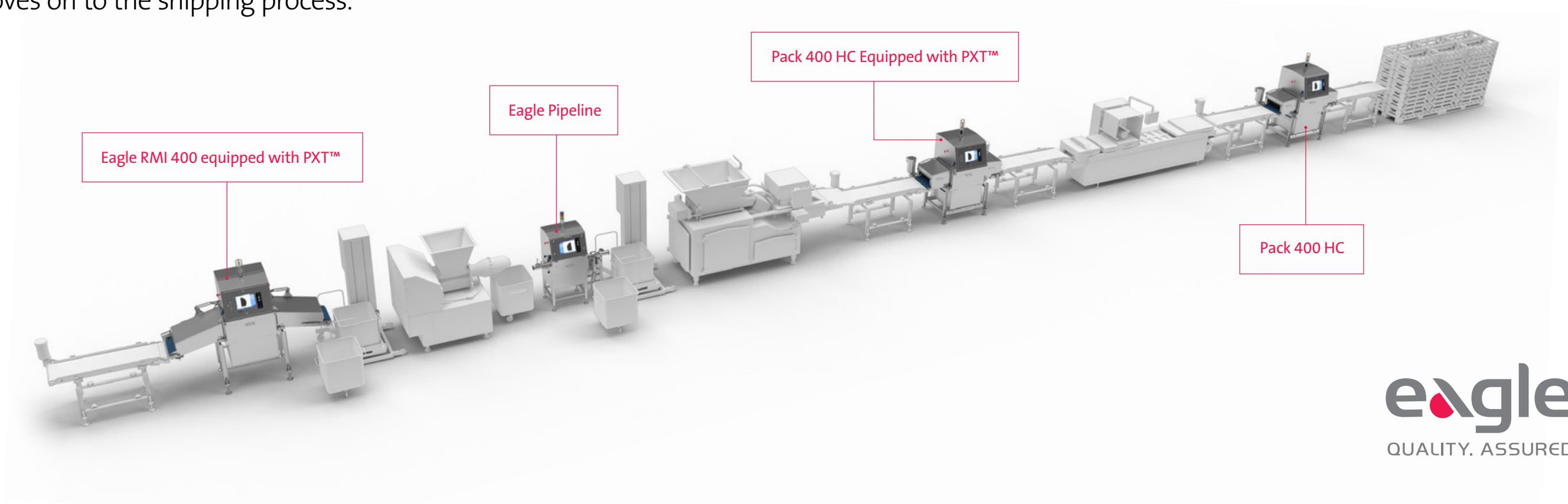
Poultry Inspection Line for **Slaughter Houses and Packers**

Deboned product is fed through the Eagle RMI 400 equipped with PXT™, where product either moves on to grading or is rejected and reworked. Poultry then moves through the quality grading system, separated by size and type. The RMI 400 equipped with PXT™ greatly assists with this process due to the ability to see and analyse shape and weight of each individual breast. Final product is packaged, with the Eagle Pack 400 HC inspecting end of line packaged product for contaminants while conducting quality checks (weight, count, shape, voids). Packages not on spec move to a reject conveyor and approved product moves on to shipping.



Poultry Further Processing Inspection Line

Inspect incoming raw materials with Eagle RMI 400 equipped with PXT™ to ensure all contaminants, including smaller, hard to find bones are removed before moving into further production. From the grinding process, the product is pumped through the Eagle Pipeline for further inspection for contaminants, prior to being formed or stuffed. Poultry is inspected prior to packaging with the Eagle Pack 400 HC for contaminants. Poultry is then packaged as final product, where an Eagle Pack machine inspects packaged product for contaminants and conducts quality checks such as (weight, count, shape and void). Good product then moves on to the shipping process.



Experience the **Next Generation Breakthrough** in Poultry Inspection

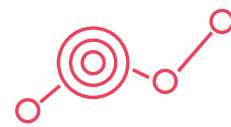
The radically enhanced PXT™ x-ray inspection technology provides **unmatched performance** for the next generation of poultry processing delivering:



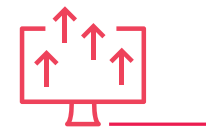
Unrivalled
product safety



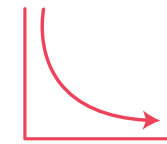
Exceptional
quality



Improved
processes



Enhanced
system versatility



Reduced
operating costs

See the Industry's Breakthrough Poultry Technology Solution at our **Virtual Poultry Show**



- Video presentation about PXT™
- Webinars, white papers, and videos
- Interactive exploration of Eagle poultry systems
- A poultry information center
- A chat dialog box for questions
- And much more!

TELL ME MORE



Strong Support and Training

Eagle provides highly-responsive support and service coverage globally, through a network of expert partners, supported by a core team of regionally-based Eagle experts. We provide the lowest total cost of ownership and a fast ROI to maximize and extend the lifetime value of the equipment.

Eagles [Preventative Maintenance and Performance Verification](#) programs allow service technicians to examine your processes in depth to keep your x-ray systems 100% operational, 100% of the time.

We'll come to you, we can run on-line, or we can schedule training sessions in one of our safe, controlled facilities.

100%



+1-877-379-1670
eaglesales@eaglepi.com
eaglepi.com

Schedule a **FREE** product application analysis to learn how Eagle systems can deliver benefits to your bottom line.

eagle
QUALITY. ASSURED.