

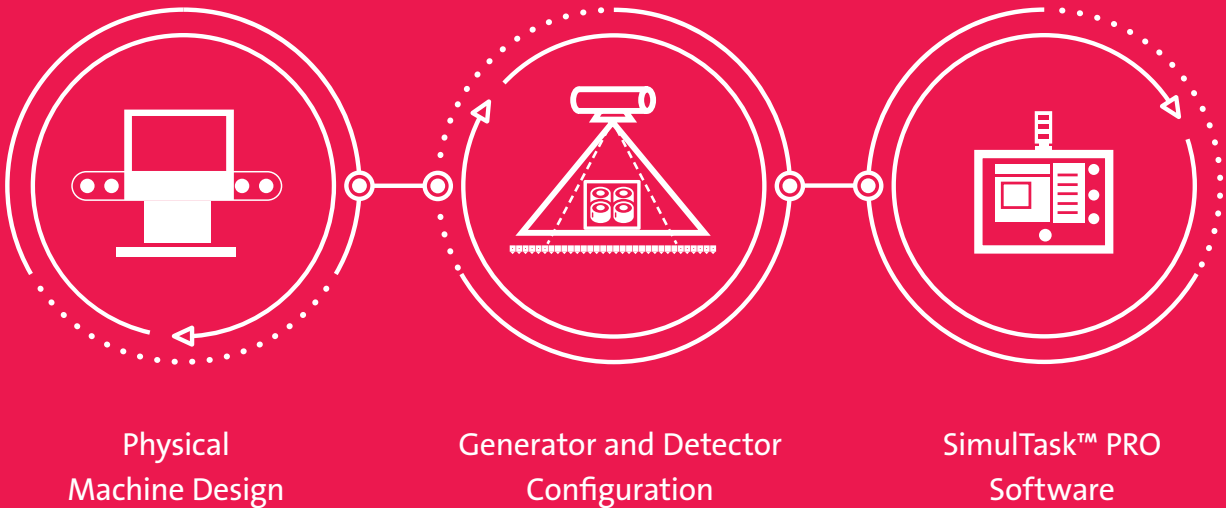
The Superior Intelligence
of **SimulTask™ PRO** for Meat
and Poultry Producers

Superior intelligence. Superior results.

You can expect more with SimulTask™ PRO Eagle's advanced image analysis software. At Eagle we are committed to developing intelligent x-ray analysis solutions that provide superior results. SimulTask™ PRO takes the guesswork out of x-ray imaging, so meat and poultry producers can focus on safety, quality, operational efficiency and profitability.

SimulTask™ PRO is a customizable software that can be tailored to your specific product applications with the flexibility to evolve with the ongoing demands meat and poultry manufacturers face.

Combining best-in-class physical machine design with multiple generator and detector configurations, and SimulTask™ PRO, you get the best solution with superior inspection results for your production line.



Three system components work together to assure every product is **compliant and contaminant free.**

1. Physical machine design

Eagle's robust machines are built for challenging environments and stringent production line conditions. The sanitary and hygienic design features ensure your line meets the highest standards of safety and compliance, including:

- **Hygienic construction** – contour and open surfaces
- **Fast sanitation** – unobstructed sightlines
- **Maintenance friendly** – maximizes machine uptime

2. Generator and detector configurations

In an x-ray system, the better the quality of the image, the better the image analysis. Eagle has a wide range of generator and detector configurations to suit a variety of production line requirements such as variations in product size, speed, composition and more in order to create the best possible image. Depending on the potential contaminants, product type, packaging, and production line speed, Eagle offers a wide range of single, dual energy MDX and PXT™ x-ray inspection technologies. These additional technologies capture even more information about the product being inspected in an x-ray image, which can then be identified during image analysis in SimulTask™ PRO.

3. SimulTask™ PRO software

Eagle's proprietary x-ray imaging analysis software is the most intuitive and intelligent technology in the industry. SimulTask™ PRO is an advanced platform that harnesses data from multiple diodes via high resolution analog to digital converter to interpret and create the most exceptional image, despite challenging production line conditions – all at incomparable processing speeds. It uses advanced algorithms to perform greyscale analysis detecting subtle changes in product composition. A wide range of filters can be applied to the image so it only examines relevant image information. With SimulTask™ PRO, your images will be the highest resolution, consistently delivering the detail you need for superior contaminant detection and simultaneous quality checks, such as mass and zonal measurement, count, shape verification, void detection and more!

Improve your results with the superior inspection analysis and multitasking capabilities of SimulTask™ PRO.



Enhanced performance: SimulTask™ PRO allows more image analysis operators over any other software on the market, and simultaneous processing of contaminant detection, weight, fill level inspection, package integrity, and component count. It can even process and analyze parallel images without compromising performance.



Advanced traceability: SimulTask™ PRO offers full image storage, retrieval and review to improve operational efficiencies and help you maintain compliance. You'll get trend reports on information and statistics, letting you make adjustments based on history to keep your lines productive.

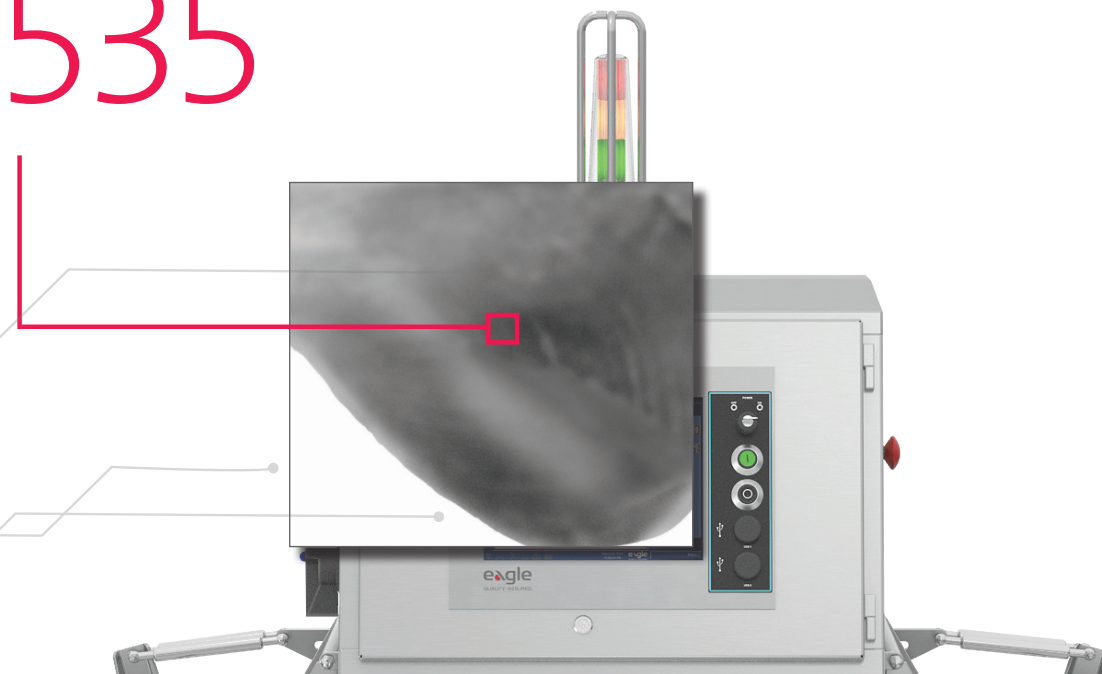


Higher throughput and productivity: The multilane capabilities and dynamic PRODUCT SWITCH™ features of SimulTask™ PRO allow manufacturers the flexibility to produce a multitude of products on one line with one machine, which means you can do more with less. SimulTask™ PRO can simultaneously process several different products with different specifications for weight, contaminant detection and more. SimulTask™ PRO can be programmed with different algorithms to identify different products based on characteristics. These unmatched capabilities will lead to improved line productivity.



Superior detail in every x-ray image: SimulTask™ PRO advanced image processing algorithms provide high resolution, exceptional clarity, and extraordinary detail. With the **highest greyscale range of 65,535 values**, you will see deeper contrast and subtle differences from SimulTask™ PRO, offering image processing that is unmatched in the industry.

65,535



The following application challenges demonstrate a few of the **wide-ranging capabilities** of SimulTask™ PRO.

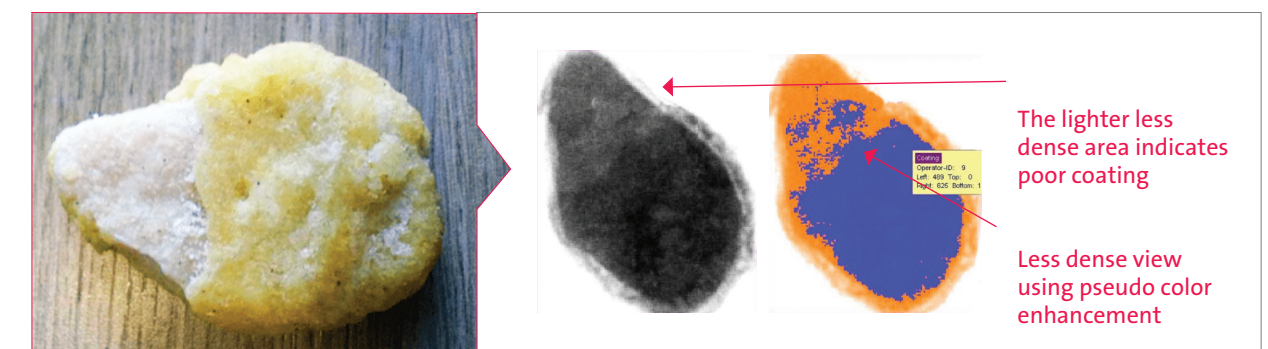
Meat and poultry producers face unique application challenges with many shapes, sizes, densities, and packaging for a variety of products. Eagle is advancing inspection technology all along the production line to help manufacturers deliver the safest, highest quality products while improving operational efficiencies.

Application 1: Bone detection in chicken breasts



The Eagle RMI 400 equipped with PXT™ technology and SimulTask™ PRO advanced imaging software delivers the highest levels of bone detection. This total system detects smaller bone fragments in chicken breasts with less false rejects.

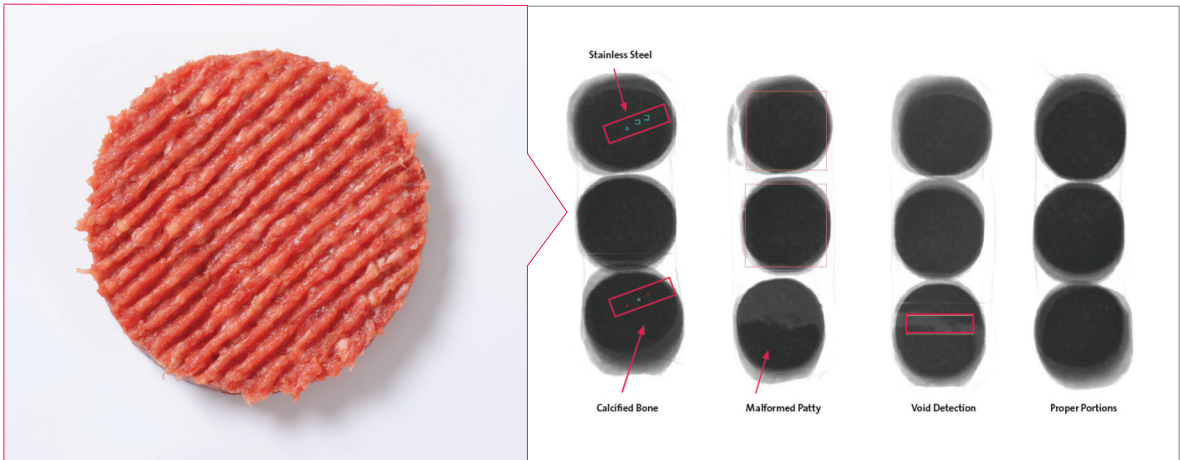
Application 2: Contaminant, shape and coating check in chicken nuggets



Using a specially designed SimulTask™ PRO algorithm, poultry processors can inspect for the correct amount of coating on each individual piece of nugget and at the same time look for contaminants and check for correct weight.

Application capabilities samples (cont.)

Application 3: Ensuring product integrity in burgers



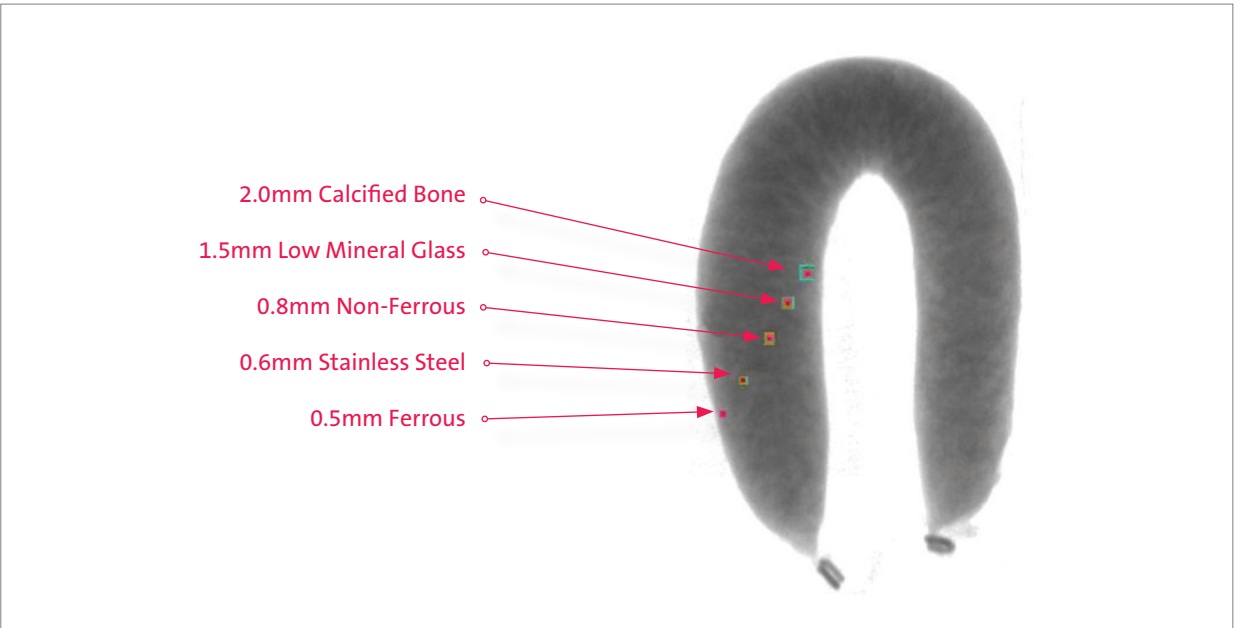
In just one pass, SimulTask™ PRO is capable of inspecting for contaminants, checking for the correct shape or malformations, detecting voids and ensuring proper portioning for ground meat burger patties. At the same time, it will reject products containing foreign contaminants as well as calcified bone.

Application 4: Fat analysis in ground meat



Eagle has combined the best-in-class DEXA (Dual Energy X-ray Absorptiometry) technology with the advanced software of SimulTask™ PRO to lead the way in fat analysis and chemical lean measurement. Eagle has an exclusive portfolio of fat analysis machines that allow meat processors to optimize raw material use, comply with end-product specifications and maximize profits.

Application 5: Clip and contaminant detection in dried meats



SimulTask™ PRO intelligent software can find foreign bodies with exceptional detection levels for products containing elements that typically would be detected as contaminants, such as chirozo rings with metal clips. If this product was inspected with a metal detector it would be rejected. Eagle has developed algorithms that allow the software to ignore the metal clips and detect only foreign body contaminants. In addition to finding a wide range of contaminants, SimulTask™ PRO can detect missing clips and clip shards which are both very common challenges for dried meat manufacturers.



SimulTask™ PRO summary

Eagle's proprietary SimulTask™ PRO software offers the highest greyscale on the market of 65,535 values, and the latest processing software algorithms for superior contaminant detection. Because today's meat and poultry manufacturers are increasingly doing more with less, the software enables parallel image analysis processing and can be used in multilane settings. With built in versatility, the software can be customized for each specific product and application in order to perform other tasks that may be needed for producing the highest quality products.

Most importantly, in a market where safety and compliance are at the forefront and greater information and traceability is imperative, SimulTask™ PRO meets that challenge with full image storage, retrieval and review. **SimulTask™ PRO. Where superior intelligence meets superior results.**

Eagle is committed to advancing technology.

Eagle's advanced inspection systems can deliver product safety, and our cost-effective solutions will enhance productivity while improving your bottom line. Ensure customer and brand protection when you **inspect more, and expect more, with Eagle.**

Eagle Product Inspection

1571 Northpointe Parkway, Lutz, FL 33558, USA
+1-877-379-1670 (telephone)
+1-813-543-2049 (fax)
eaglesales@eaglepi.com
www.eaglepi.com

Greenfield, Royston Business Park,
Royston, Hertfordshire SG8 5HN, UK
+44 (0) 1763 244 858 (telephone)
+44 (0) 1763 257 909 (fax)

